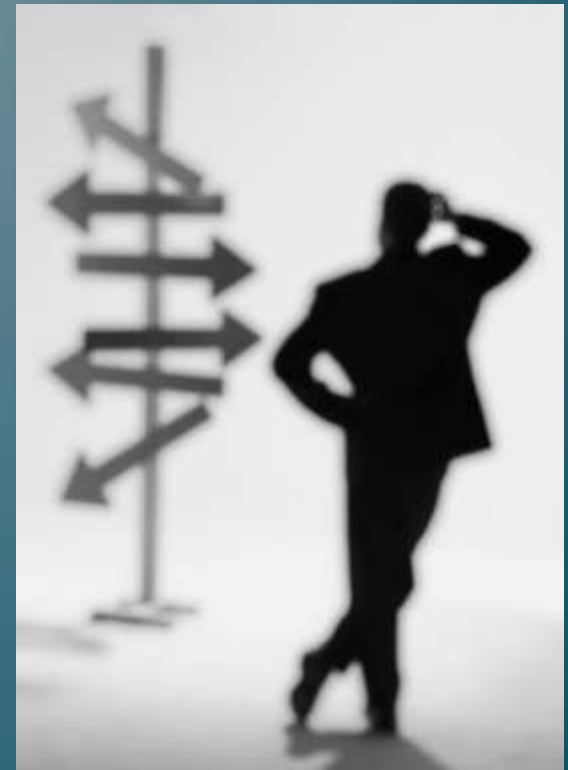
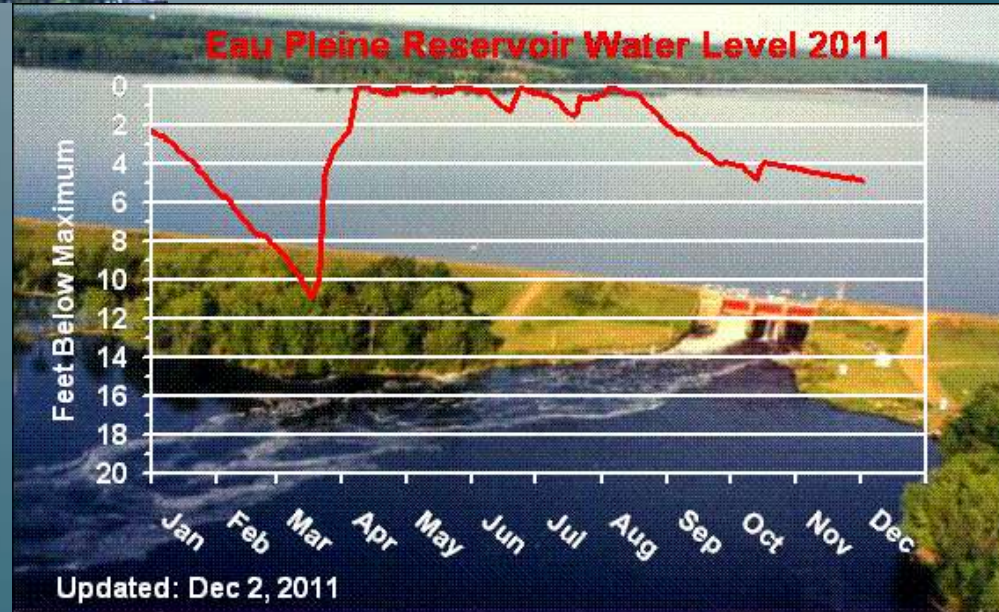
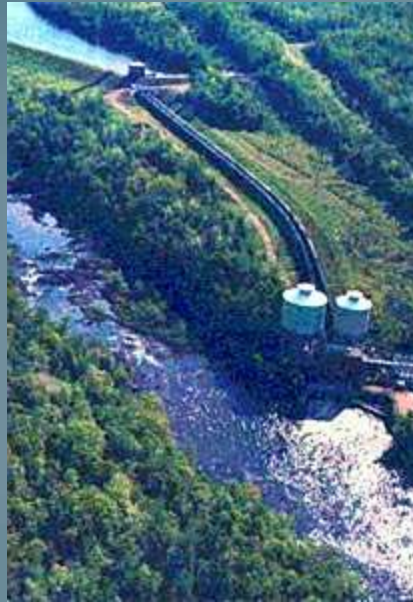


STRATEGIC PLAN FOR THE BIG EAU PLEINE WATERSHED AND RESERVOIR



THE REGIONAL IMPACT OF THE BIG EAU PLEINE WATERSHED



THE LANDSCAPE OF THE BIG EAU PLEINE WATERSHED

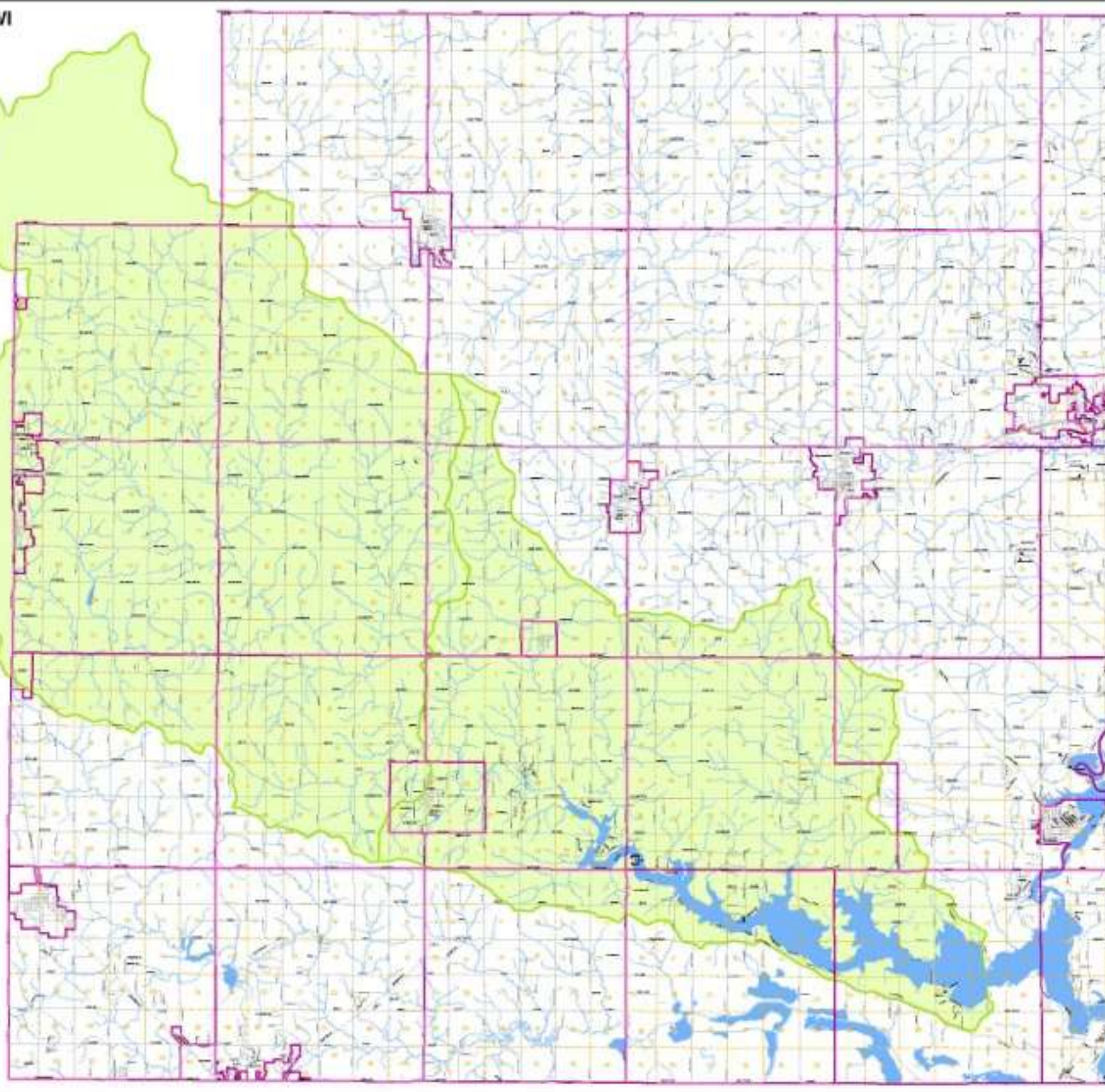
WESTERN MARATHON COUNTY, WI
Big Eau Pleine River
Upper & Lower Watershed Areas

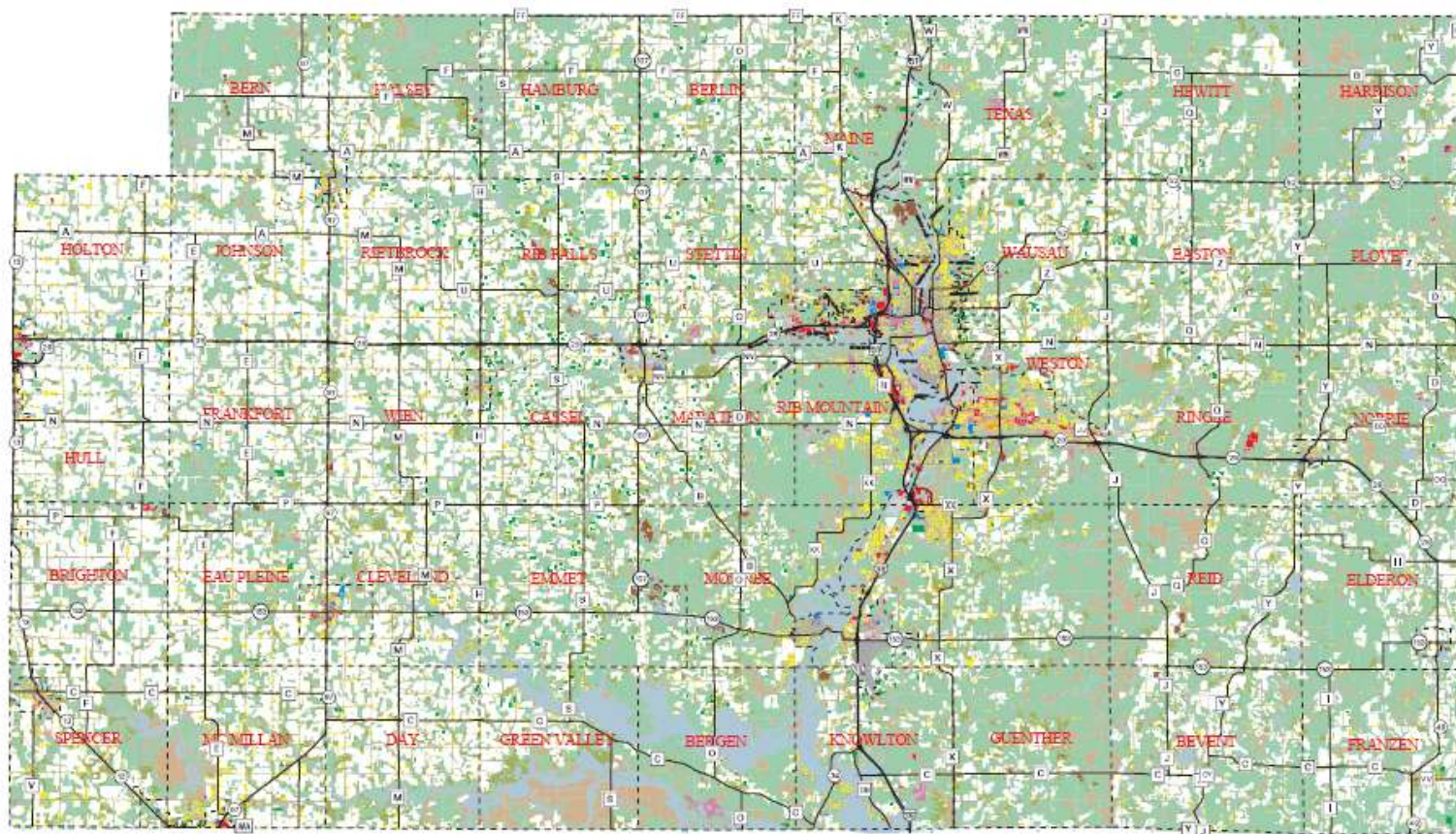


Features

- Big Eau Pleine Watersheds
- Flowages-Lakes
- Streams-Rivers
- Streets
- Sections
- Municipal Boundary

Marathon County, WI





Map Developed by Marathon County CPZ & GIS 2005

Figure 4-1
2000 Landuse/Landcover
MARATHON COUNTY





HUCKLEBERRY ST

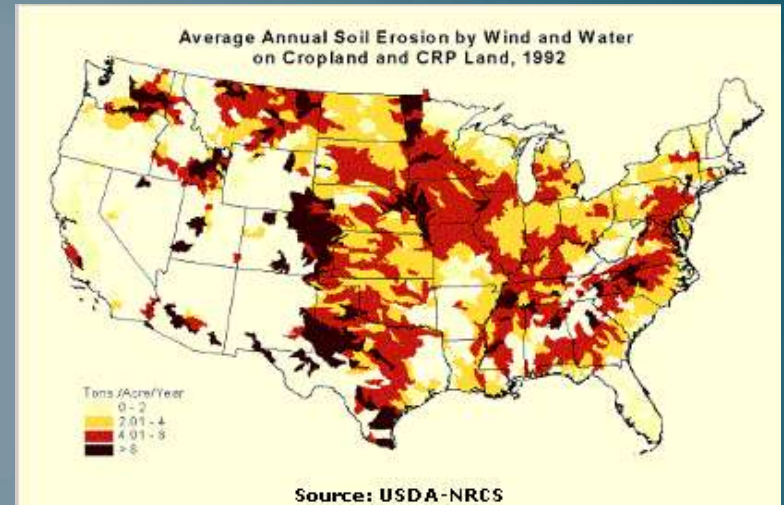
WIEN





ON-GOING EFFORTS

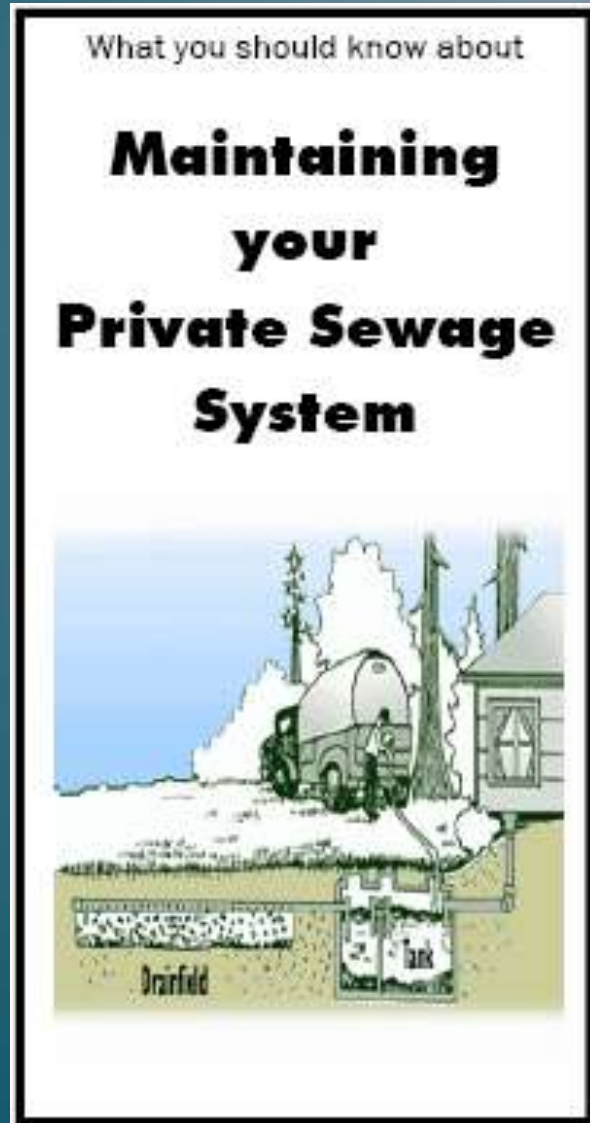
CONSERVATION COMPLIANCE



NON METALLIC MINE RECLAMATION



SANITARY SYSTEMS



GENERAL CODE OF ORDINANCES FOR MARATHON COUNTY CHAPTER 15 PRIVATE SEWAGE SYSTEMS

www.co.marathon.wi.us
March 2010

STORMWATER & WASTEWATER MANAGEMENT



**THIS IS YOUR
SWIMMING POOL.**

**THIS IS
NOT A FILTER.**

**NO
DUMPING**

Northcentral Wisconsin
Stormwater Coalition


**Clean water
starts with you!**



**BUT WE'RE STILL
NOT DOING ENOUGH!**



ORGANIZATIONAL RESPONSIBILITY



OVERARCHING GOALS

- Marathon County comprehensively plans growth for the *best potential use of land and resources* to protect the environment, support recreational opportunities, and promote economic development.
- *Community interests* are placed ahead of individual interests when there is a perceived benefit that the community is willing to fund.
- Publicly and privately owned resources support the *health, safety, and welfare* of people.
- The *uniqueness* of Marathon County is preserved.

MARATHON COUNTY GUIDING PRINCIPLES

- Respect *local governance*
- *Preserve* working *agriculture*
- Maintain a *sense of place*
- Preserve *rural character*
- Safeguard *natural resources*
- Foster *managed growth* and *coordinated development*
- Cost effective and *efficient* provision of *public service*
- Build social and civic *capacity*
- Support rural service centers
- *Preserve* and *enhance* the local *tax base*

BIG EAU PLEINE TASK FORCE

TASK FORCE PARTNERSHIPS



United States Department of Agriculture
Natural Resources Conservation Service



Clark County Government
Wisconsin



SHORT-TERM AERATION PLAN



LONG-TERM STRATEGIES FOR THE BIG EAU PLEINE WATERSHED AND RESERVOIR



STRATEGIC PLAN FOR THE BIG EAU PLEINE WATERSHED AND RESERVOIR GOALS

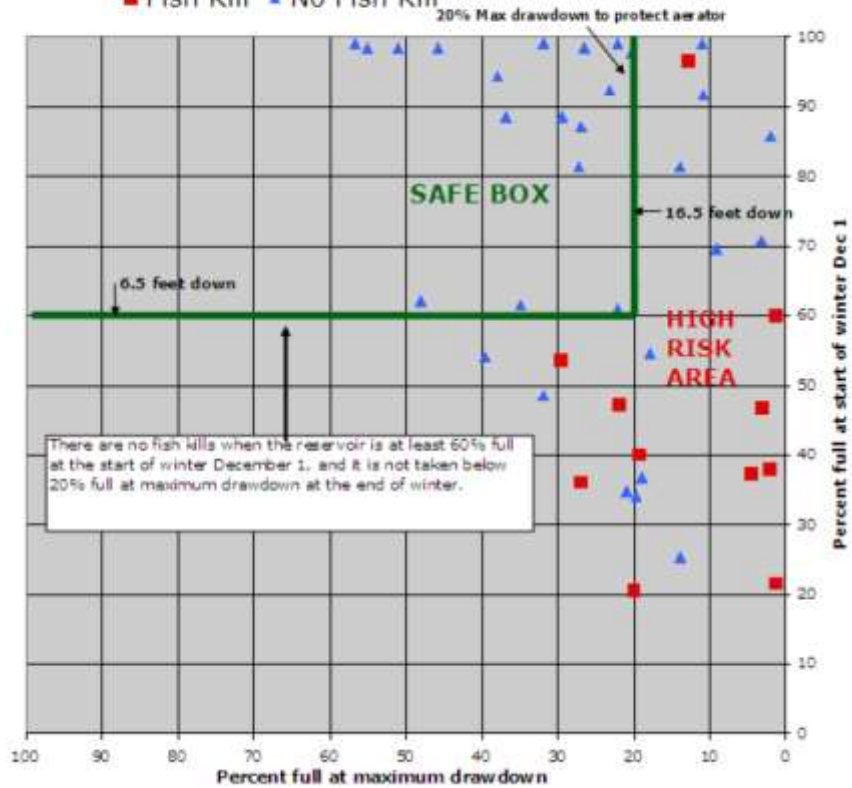
- *Improve the health of the river system*
- *Minimize fish kills*

WATER QUALITY



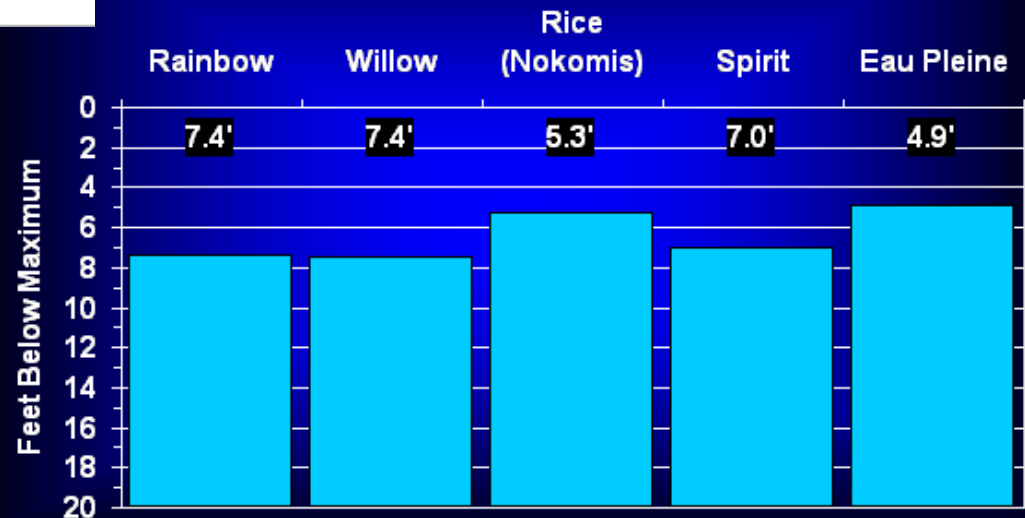
Big Eau Pleine Reservoir: 41 years 1970-2010
Percent full at maximum drawdown vs percent full December 1

■ Fish Kill ▲ No Fish Kill



Water Levels - Dec 02, 2011

5 Largest Reservoirs Operated For Daily Flow Goals



LONG-TERM STRATEGIES

AERATION AND SYSTEM OPERATION & MAINTENANCE



RESOURCE MANAGEMENT INITIATIVES

- *Reservoir management plan*
- *Manure land spreading*
- *Recreation management plan*
- *Land owner education*
- *Farmland preservation*
- *Agricultural enterprise area*
- *Reservoir operations*
- *Best management practices*
- *Aeration system operations*
- *Water quality assessment*

RESOURCE MANAGEMENT INITIATIVES



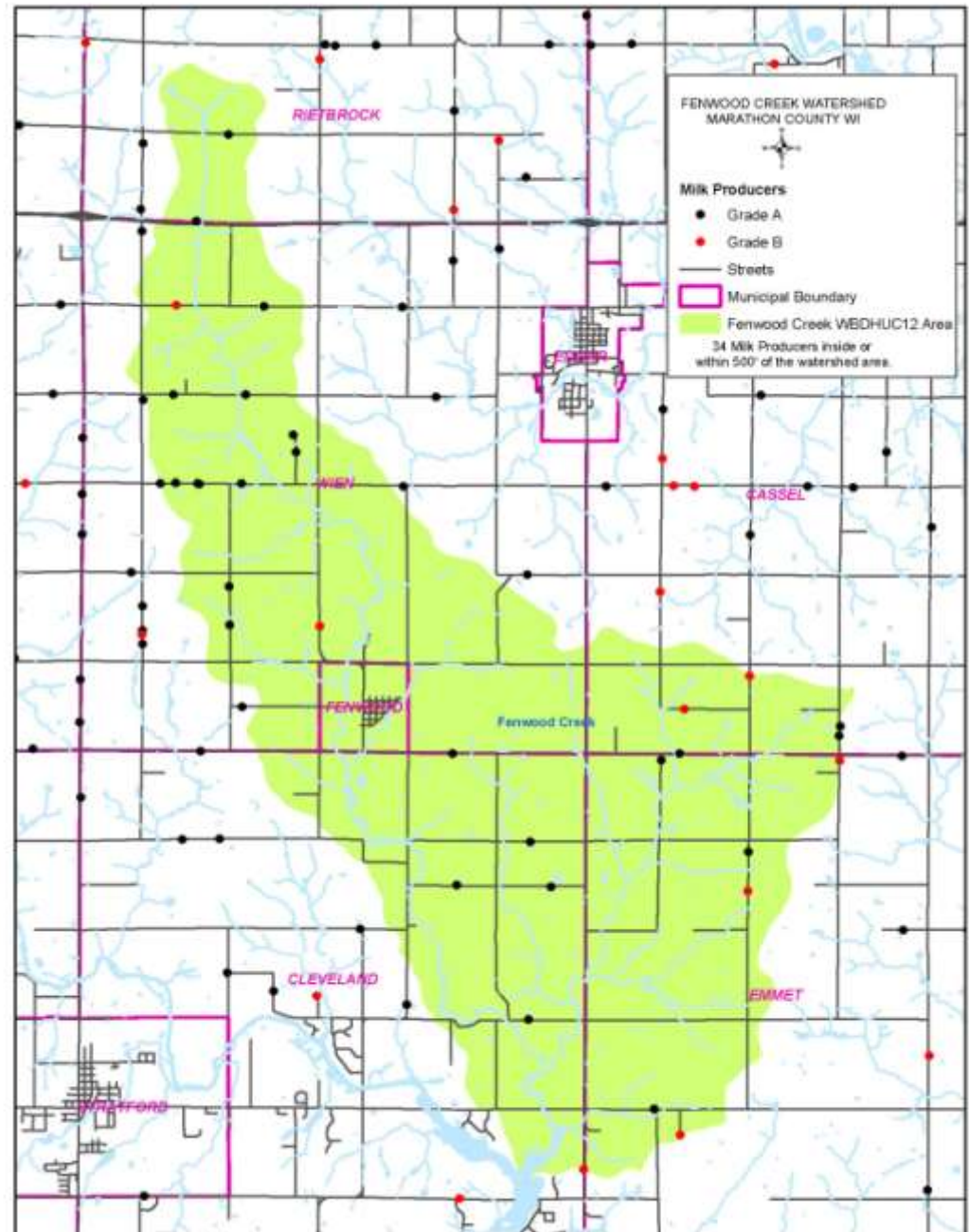
United States Department of Agriculture
Natural Resources Conservation Service



Clark County Government
Wisconsin



FENWOOD CREEK WATERSHED PROJECT



FENWOOD CREEK WATERSHED PROJECT

- *Water quality monitoring*
- *Education*
- *Nutrient management planning*
- *Winter manure spreading assessment*
- *Financial and management incentives*
- *Waste treatment and distribution technology*

ROLE OF MARATHON COUNTY BOARD OF SUPERVISORS

- *Accept the Strategic Plan for the Big Eau Pleine River Watershed and Reservoir*
- *Guide local policy*
- *Guide program initiatives*
- *Develop Implementation Plan for Fenwood and then BEP*

Thoughts? Comments?
Questions?

Thanks

Paul Daigle

Paul.daigle@co.marathon.wi.us

715-261-6006